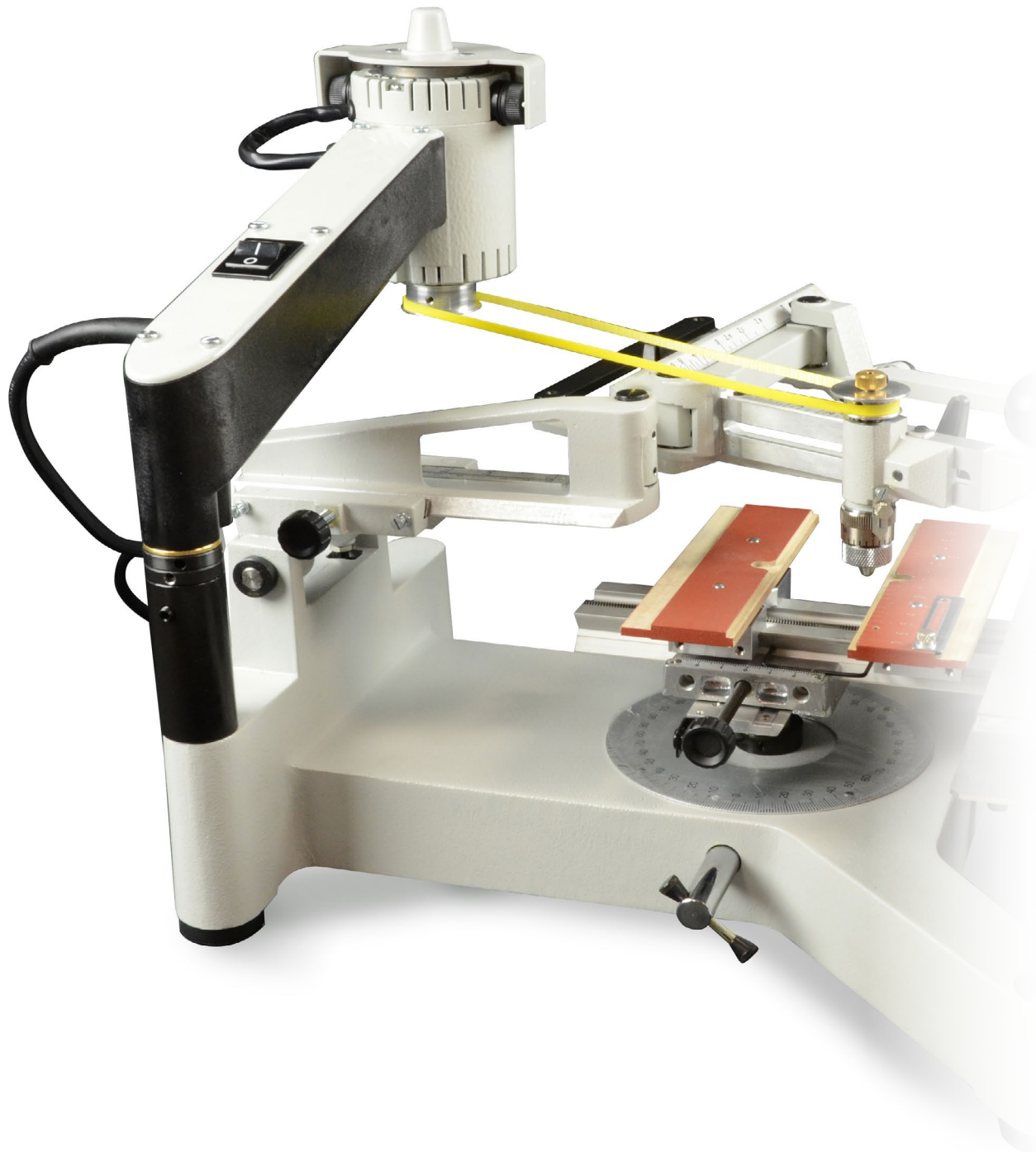




ENGRAVING STATION

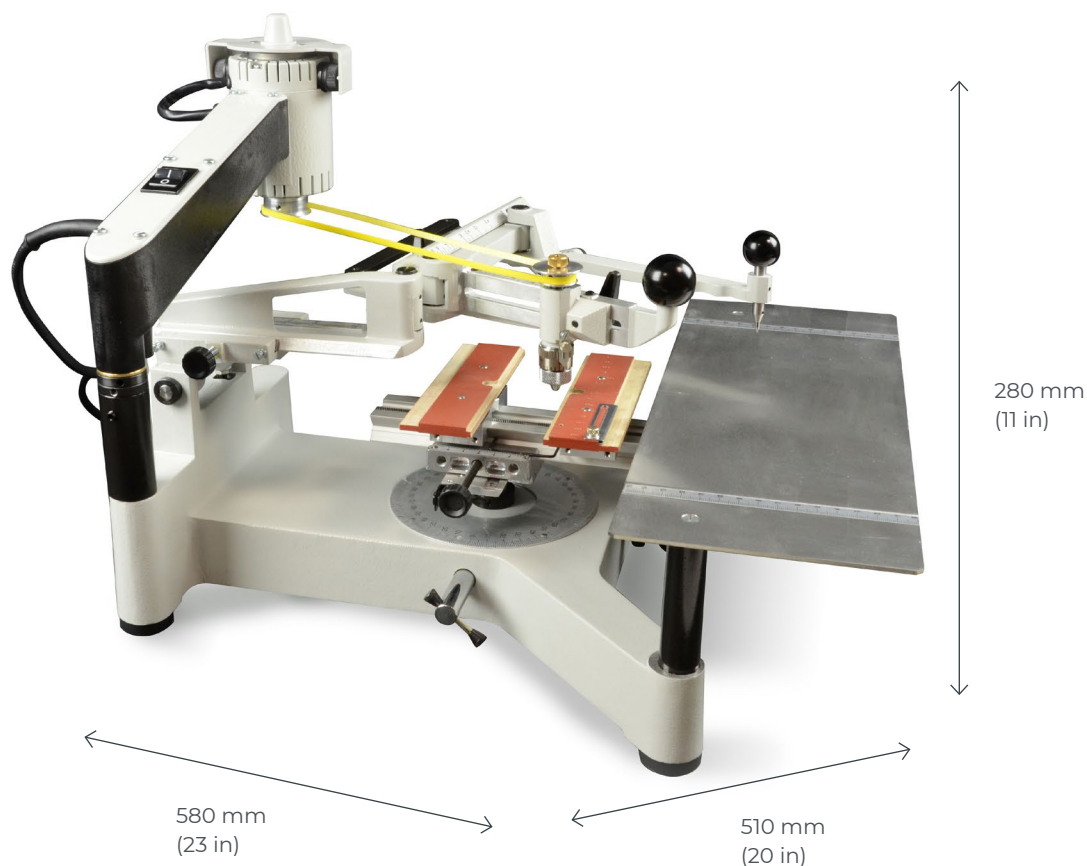
IM3



**GRAVOTECH**  
EXPRESSION OF THINGS



In 1938, we revolutionised the world of engraving with a new definition of pantographs, simpler, more reliable and user friendly. The IM3 manual engraving machine is one of our best-sellers to engrave flat items for signage and personalization.



### **MANUAL ENGRAVING MACHINE**

The IM3 pantograph works on its own, without a computer, electronic device, or software. Select your characters among a full set and start manually engraving. The arm is fitted with a stylus and moves in the groove of the model, while the other arm fitted with a pin reproduces the composition. With our timeless Pantograph, you can produce superior engravings without screens.

### **SIMPLE ENGRAVER WITH A VINTAGE MECHANIC**

No fancy design or decorated structure, the IM3 is a vintage engraving machine that claims its belonging to the old industrial times. The mechanical structure is easy to access when needed as it is entirely bare. Watch your engraving being done while making it, and instantly see the result of your work!

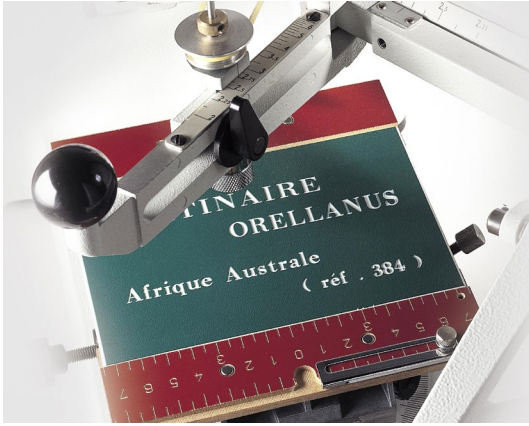
### **CONSTANT ENGRAVING LINE**

Thanks to the ingenious vibration-resistant depth adjustment nose, the engraving remains constant regardless of the material. Engrave brass, copper, steel, plastic, wood, and much more. Several styluses are available for different results.

SEE OUR VIDEO



## KEY FEATURES

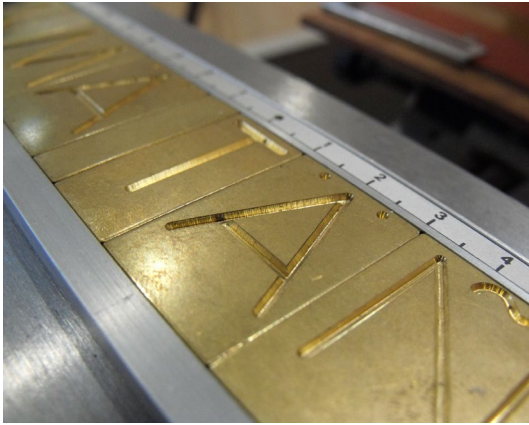


### Unique customer experience

The Pantograph is both timeless and a journey through time: the IM3 is the creation of decades of enhancements while using a technique that has existed since ancient Greece.

Surprise and amaze your customer by manually engraving their gift, plate, or flat jewel: it is your know-how and expertise that will make their objects unique.

Why not even invite them to select their characters and put them on the character runner themselves?



### Engraving clamps and accessories

Having a manual pantograph does not mean that you are limited in your engravings.

We provide a full range of clamps and tools to suit all of your applications: jaw covers for plate engraving, jewellery, watches, badges, pens, and depth adjustment noses.

Engrave, bevel, and score with our different cutters made from steel, carbide, or diamond.

More than 40 international character sets are available.



### Eco-friendly engraving machine

Help reduce the CO2 emissions with our IM3 pantograph machine.

Suppress the need for power by replacing the spindle with a diamond tip that does not rotate.

The simplicity makes transport easy and our Pantographs stood the test of time!

LEARN MORE ABOUT PRODUCT



# APPLICATIONS



Electricity labels & strips



Funeral plaques and headstones engraving



Gift Engraving



Badges & tokens



Jewellery



Identification plates

# MATERIAL CHARACTERISTICS

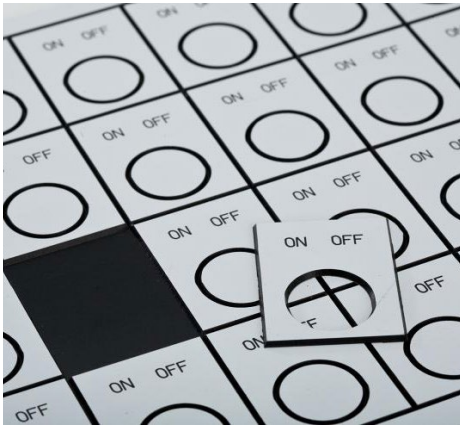
|           |                        | PANTOGRAPH |
|-----------|------------------------|------------|
| Materials | Wood, varnished wood   | ◀◻▶        |
|           | Glass, Crystal         | ▶          |
|           | Leather                | ◻          |
|           | Stone, granite, marble | ◻▶         |
|           | Food                   | ▶          |
|           | Ceramic                | ▶          |
|           | Plastics               | ◻          |
|           | Metal                  | ◻▶         |

Cutting = ▶ Engraving / deep marking = ◻ Marking / etching = ◻▶

MAKE YOUR SAMPLES



## ENGRAVABLES



### Gravoply™ 1

A robust material specifically for mechanical engraving with satin finish and scratch resistant

Applications: Indoor signage, identification plates, key tags.



### Metallex™

Metallic appearance for a high-end finish, resistant to scratches and fingerprints.

Precision marking ideal for badges, trophy plates, various awards and all indoor applications.



### Gravometal™

The varnished laser brass material. High-end brass with a protective varnish for small indoor signs, trophy personalisation plaques, boards and luxury objects.

## SERVICE & SUPPORT



### Training

Our training modules are designed to optimize your use of our solutions and are available for our full range of machines, software and accessories.



### Technical support

We bring you local support in your language in more than 50 countries, where we have established presence directly and with our distribution partners.



### Maintenance

Thanks to experience gathered with Gravograph and Technifor and our global presence in more than 50 countries with 150 Gravotech technicians and our distributor partners, we can offer you a wide range of services.

# TECHNICAL DATA

## IM3

|                                       |   |
|---------------------------------------|---|
| <b>Technology</b>                     | Pantograph                                    |
| <b>Max objects size (L x W)</b>       | unlimited x 250 mm (9,5 in)                   |
| <b>Max objects weight</b>             | 10 kg (22,04 lbs)                             |
| <b>Machine dimensions (L x W x H)</b> | 580 x 510 x 280 mm (23 x 20 x 11 in)          |
| <b>Machine weight</b>                 | 11kg (24 lbs)                                 |
| <b>Connection to computer</b>         | Manual machine<br>Not connected to a computer |
| <b>Type of spindle</b>                | Top load spindle<br>Deported motor            |
| <b>Tool diameter</b>                  | 3,17 mm (0,12 in)                             |
| <b>Rotation speed</b>                 | 18 000 rpm                                    |
| <b>Noise</b>                          | <80 dB  |
| <b>Operating temperature</b>          | min. +5°C (+ 41°F) - max. +40°C (+104 °F)     |



[info.in@gravotech.com](mailto:info.in@gravotech.com)

+91 20 41 03 00 01

[www.gravotech.in](http://www.gravotech.in)

**GRAVOTECH ENGINEERING PVT LTD**

Gat No 2323/1, 'Reality Warehousing', Nagar Road  
412207, Pune – Wagholi, India

Follow us:

